

The Centre of Excellence for Lesotho, “Community TB Care”

The CoE in Lesotho aims to improve case notification through community based approaches in TB management in the underserved and hard to reach areas.

Service package

Community TB Care will be implemented through a service package comprising of four (4) key components as follows:

Component 1:

Innovative active TB screening

- a)** Door to door four symptom TB screening of CoE target group
- b)** TB screening campaigns using digital X-Ray
- c)** GeneXpert testing as diagnostic test for all presumptive TB cases
- d)** HIV counselling and testing
- e)** Screening for blood pressure and blood glucose.



Component 2:

Sputum referrals and linkage to care

- a)** Sputum sample collection and transportation to the laboratory
- b)** Delivery of results back to sites
- c)** Basic sputum induction procedures for community level to ensure all presumptive TB cases will submit specimen.
- d)** Cross-border referrals tracing and linkage to care



Component 3:

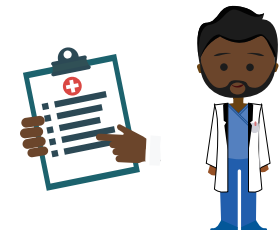
Patient treatment /follow-up/ support and contact tracing

- a)** Initiation of TB treatment for all confirmed TB cases (facility based)
- b)** HIV Testing Services for all TB patients and initiation of treatment (facility based)
- c)** Screening for blood pressure and blood glucose
- d)** DOTs for all identified and confirmed cases
- e)** Tracing of Loss to follow ups
- f)** Contact tracing and follow-up
- g)** Under 5 Isoniazid preventive therapy (IPT) monitoring and support

Component 4:

TB awareness and infection control

- a)** Education, information and communication to increase TB and infection control literacy
- b)** Awareness on Occupational Health Diseases (OHD)
- c)** Provision of masks for infection control



Implementation strategy – Community TB Care

Implementation will be comprised by two phases:

1

Pilot phase in two high burden districts (Thaba-Tseka and Leribe)

2

Scale-up phase – to a total of 4-5 districts based on pilot results