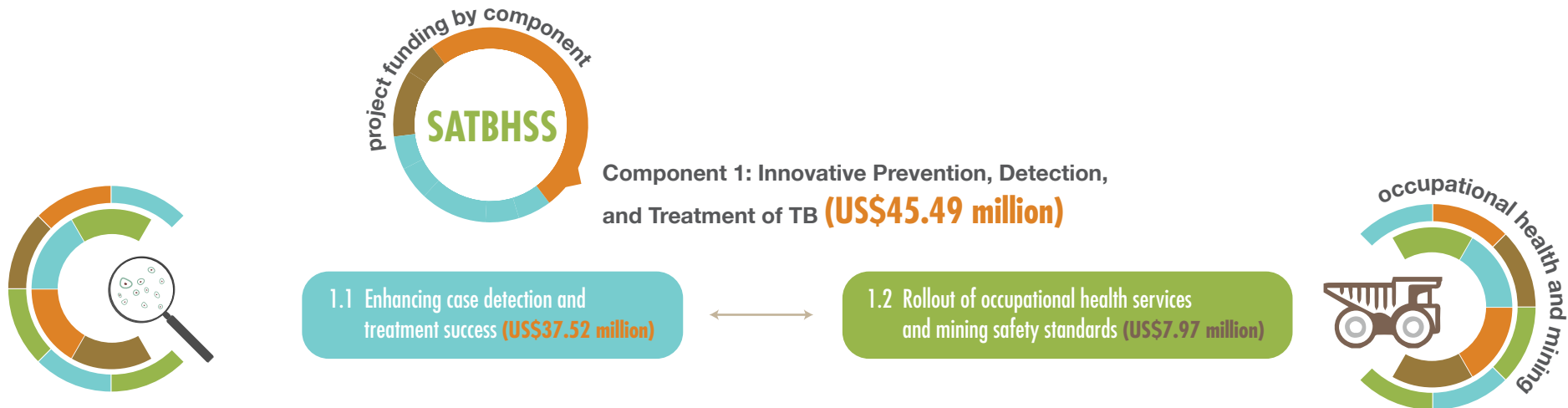
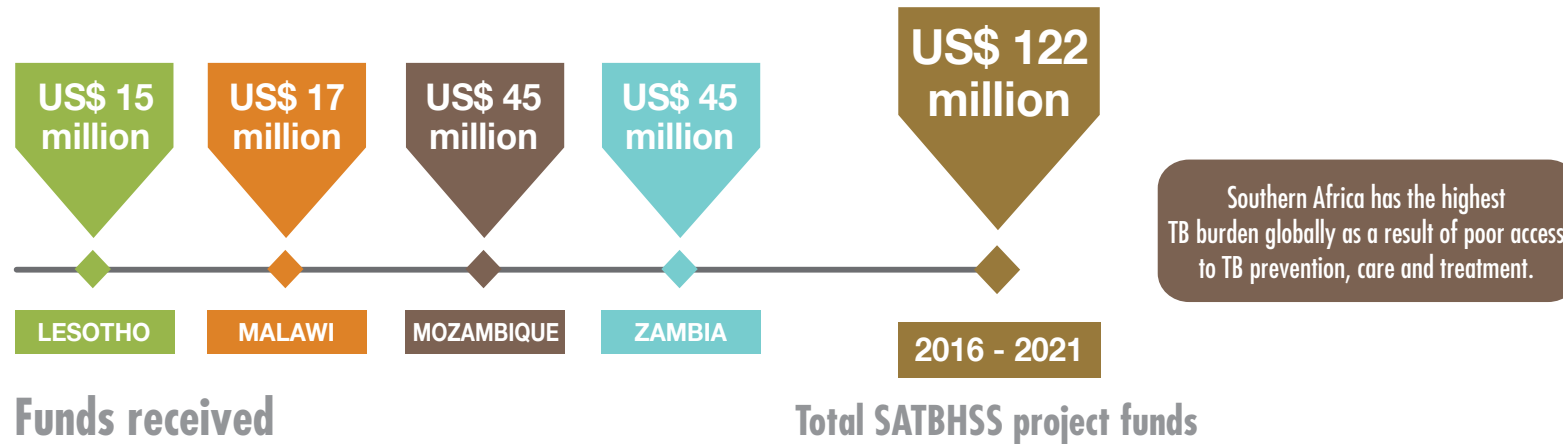




## Southern African Tuberculosis and Health Systems Support (SATBHSS) Project



Southern Africa has the highest TB ratio in the world.

# Southern African Tuberculosis and Health Systems Support (SATBHSS) Project

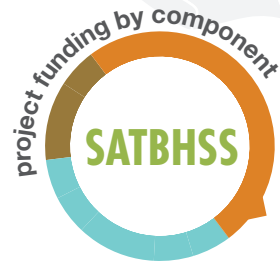


Component 2: Regional Capacity for Disease Surveillance, Diagnostics, and Management of TB and Occupational Lung Diseases **(US\$43.19 million)**

2.1 Improving quality and availability of human resources **(US\$15.24 million)**

2.2 Strengthening diagnostic capacity and disease surveillance **(US\$23.02 million)**

2.3 Strengthening mine health regulation **(US\$4.93 million)**



Component 3: Regional Learning and Innovation, and Project Management **(US\$33.32 million)**

3.1 Operational research and knowledge sharing **(US\$3.61 million)**

3.2 Centers of excellence in TB and occupational lung disease control **(US\$5.76 million)**

3.3 Regional coordination, policy advocacy, and harmonization **(US\$14.22 million)**

3.4 Project management **(US\$9.73 million)**



WORLD BANK GROUP



East, Central and Southern Africa Health Community  
Fostering Regional Cooperation for Better Health